

# 99944700180

## CSG-6700 OPTIONAL WATER COOLING KIT INSTALLATION, ASSEMBLY AND OPERATING INSTRUCTIONS

**⚠ DANGER**  
READ RULES FOR SAFE OPERATION  
AND INSTRUCTIONS CAREFULLY

These instructions provide the information necessary for installation, assembly and use of the Optional Water Cooling Kit.

ECHO provides each cut-off saw with an operator's manual. You must read the operator's manual to understand the safe and effective operation of your ECHO product. If you need to obtain a copy of the cut-off saw operator's manual, please write ECHO, Incorporated, 400 Oakwood Road, Lake Zurich, Illinois 60047.

**⚠ DANGER**  
Read rules for safe operation and instructions carefully. ECHO provides an operator's manual that must be read for proper and safe operation.

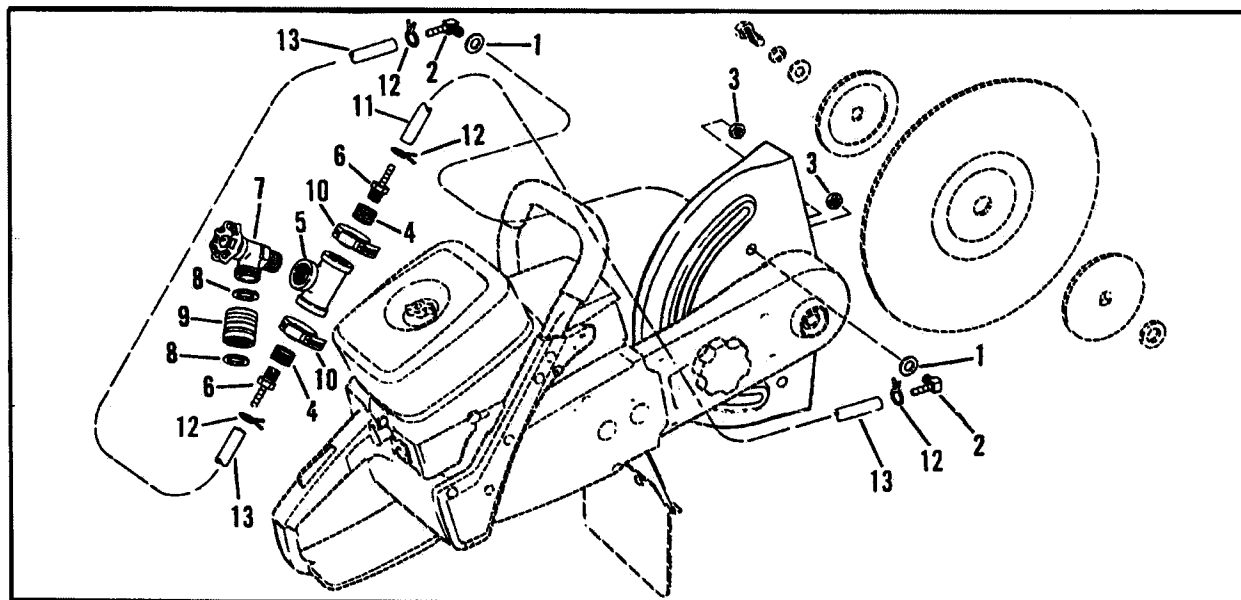


Figure 1

### WATER COOLING KIT CONTENTS

Key No.	Part Description	Part Number	Qty. Used	Key No.	Part Description	Part Number	Qty. Used
1	Washer	900602-00010	2	8	Garden Hose Washer	386014-07060	2
2	Elbow Nipple	384013-07060	2	9	Female To Female Hose Adapter	429425-07060	1
3	Jam Nut	384017-07060	2	10	Worm Drive Clamp	210411-07060	2
4	Face Bushing	382015-07060	2	11	Hose (18")	384010-07060	1
5	Tee Pipe	384020-07060	1	12	Spring Clamp	357013-07060	4
6	Hose Nipple	382012-07060	2	13	Hose (26")	384011-07060	1
7	Drain Valve	429201-07060	1				

## INSTALLING OPTIONAL WATER COOLING KIT

1. Remove cap over arbor nut (1).
2. Use two combination (17 mm/19 mm) screwdrivers supplied with unit to remove wheel mounting bolt (2). Remove lock washer (3), and washer (4).
3. Remove outer flange (5), and wheel (6).

### NOTE

Inner flange (7) and spacer (8) do not need to be removed. Should they be removed, refer to Figure 2 for correct order of assembly. Inner flange (7) is not interchangeable with outer flange (5).

4. Ensure that washer (9) is placed over thread on elbow nipple (10). Do this for both nipple assemblies.
5. Rotate wheel shield (11) to position shown in Figure 2.
6. Install washer and elbow nipple which are connected to short hose (12) into hole in wheel shield on right side of saw. Refer to Figure 2.

Secure elbow nipple with jam nut (13), pointing nipple to rear of saw as illustrated in Figure 2.

7. Route long hose (14) and nipple assembly under front handle and install on left side of wheel shield (11). Tighten and align in same manner as discussed in step 6.

### NOTE

Figure 2 illustrates assembly with arm/wheel assembly in center cut position. If arm/wheel assembly is installed for flush cutting, orientation of nipples must be changed to coincide with new shield position. Hose routing remains unchanged.

8. Mount drain valve and tee assembly to saw handle using 2 worm clamps (15), as shown in Figure 2. Ensure that tee assembly does not contact handle support when clamps are tightened.
9. Ensure that female-to-female adaptor (16) has a hose washer installed. Connect water supply to drain valve assembly.
10. Install spacer (8), inner flange (7), wheel (6), and outer flange (5).

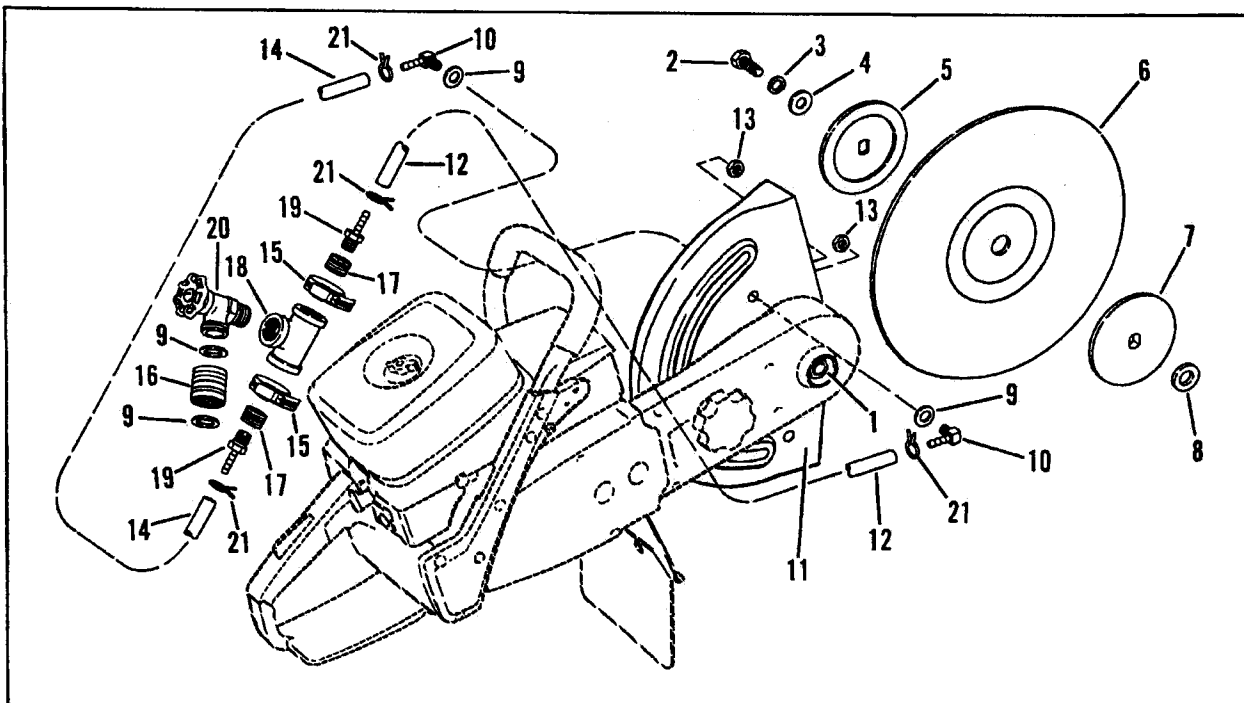


Figure 2

11. Install washer (4), lock washer (3) and wheel mounting bolt (2). Tighten bolt using two combination (17 mm/19 mm) screwdrivers.



#### **WARNING**

Before tightening, check that flanges are properly seated and not cocked on mount or on bolt threads. Do not make bolt so tight as to destroy cushion supplied by wheel blotters. Do not tighten more than 15 ft. lbs. (20 Nm).

12. Snap cap into wheel housing over arbor nut (1).

### **ASSEMBLING OPTIONAL WATER COOLING KIT (if required)**

#### **NOTE**

Always use pipe compound on all pipe tap threads before assembling components.

1. Place washers (9) over threads on elbow nipples (10). Install jam nuts (11) on elbow nipples to prevent washers from being lost.
2. Install a face bushing (17) in each end of tee pipe (18).
3. Install a hose nipple (19) in each face bushing.
4. Install drain valve (20) in tee pipe. Orient as shown in Figure 3.

5. Install a garden hose washer in each end of female-to-female hose adapter (18). Connect female-to-female hose adapter to drain valve.

6. Install shorter hose (12) on nipple located further from drain valve connection. Secure hose with spring clamp (21).

7. Install shorter hose to elbow nipple. Secure hose with spring clamp.

8. Install longer hose (14) on nipple located closest to drain valve connection. Secure hose with spring clamp (21).

9. Connect remaining end of longer hose to elbow nipple (10). Secure hose with spring clamp.

#### **NOTE**

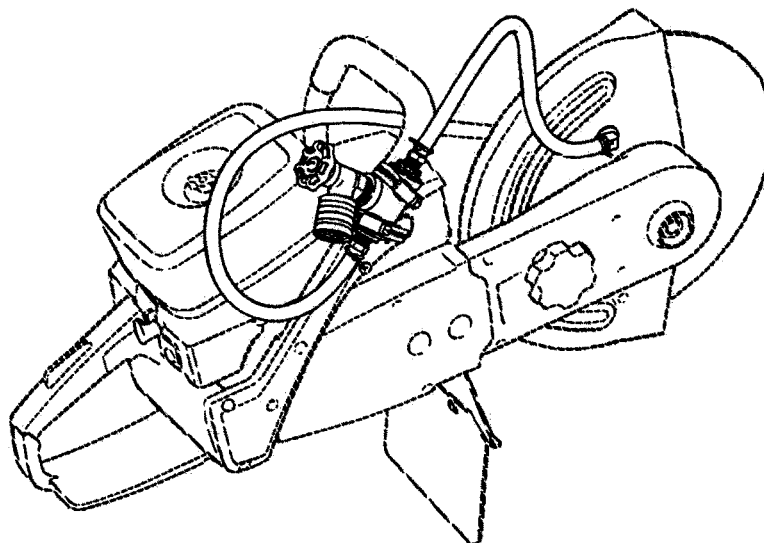
Ensure that all pipe connections are tight.



#### **DANGER**

Before tightening, check that flanges are properly seated and not cocked on mount or on bolt threads. Do not make bolt so tight as to destroy cushion supplied by wheel blotters. [Do not tighten more than 15 ft. lbs. (20 N·m)].

10. Snap cap into wheel housing over arbor nut (1).



**Figure 3**

## OPERATING INSTRUCTIONS



### WARNING

Always be sure there is wheel rotation before turning on water supply and before turning water supply off. This ensures the water will be slung off the wheel thus preserving its life and preventing an out of balance condition.

### NOTE

Adjust water supply to wheel to desired level. Turn drain valve handle clockwise to decrease water flow.



### WARNING

Before each use, check all lines and other components for breaks or cracks. Replace any damaged or worn parts before next use.

### NOTE

Ensure there are no water leaks which spray or collect on the engine or air filter portion of the powerhead. This will help prolong powerhead life.



### WARNING

Periodically check discharge holes in elbow nipples for plugging. Normal use of the saw with water kit installed, but not used, could plug these holes with debris. This could result in a lack of cooling water to one or both sides of the cutting wheel, damage to the wheel or saw and possible injury to the user or bystanders.



### WARNING

Only use water cooling on wheels designed for this purpose. Use of water cooling on wheels not so approved could result in injury.



### WARNING

Only use water for coolant. Use of other coolants is not approved.



**ECHO, INCORPORATED**

400 OAKWOOD ROAD • LAKE ZURICH, IL 60047

PHONE: 708-540-8400

Printed in U.S.A.

SUP22203665

P/N 99922203665

01/82